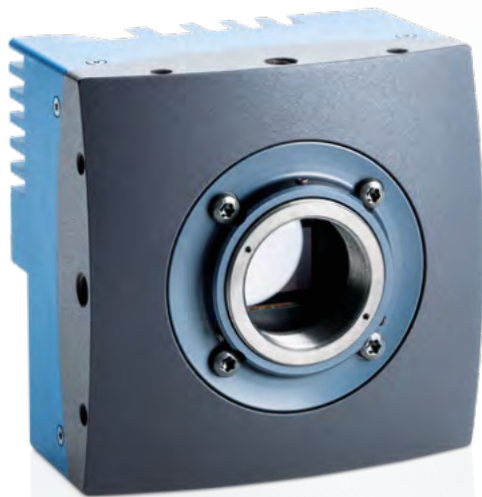
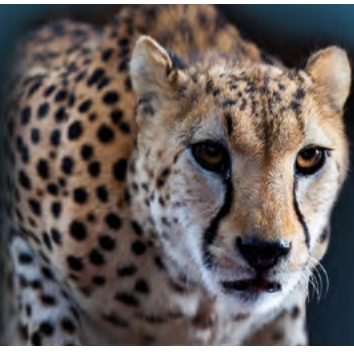


EoSens® 1.1 CXP2

Preliminary



CoaXPress

GEN<i>i</i>CAM

Engineered for highest Performance

Featuring a high-speed CMOS sensor, the EoSens® 1.1 CXP2 offers 1,280 x 864 pixel at an outstanding speed of 3,600 fps combined with an integrated CoaXPress V2 Interface with 4 x 12 Gbit/s for easy transmissions of this incredible data rate. Higher frame rates can be achieved by defining a region of interest. Based on the extremely high sensitivity the camera delivers excellent images even with low exposure times.

High Sensitivity

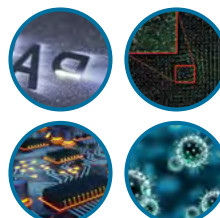
The camera's extreme sensitivity of 20 V/lux*s @ 550 nm delivers high-contrast images even in very low light conditions. This allows to integrate it in applications where lighting is the crucial point.

EoSens® 1.1 CXP2 Key Features:

- 3,600 fps at 1.1 megapixel resolution
- Up to 150,000 fps at reduced resolution
- High sensitivity
- Fast CoaXPress V2 Interface
- 80 x 80 x 53 mm small

APPLICATION EXAMPLES

- Melt pool monitoring
- Additive Manufacturing
- Ball grid inspection
- Sorting
- PIV measurements
- Inspection
- Roboter positioning
- Microscopy



MIKROTRON
High-Speed Vision Solutions

Compact Design

Contained within an 80 x 80 x 53 mm in a fanless metal housing with highest data rates and an extremely fast CoaXPress V2 Interface, the EoSens® 1.1 CXP2 is suited for use in a wide range of industrial applications.

Frame rates

| Resolution | Frame rate |
|----------------|------------------|
| 1,280 x 864 px | 3,600 fps |
| 1,024 x 768 px | 4,200 fps |
| 640 x 480 px | 7,000 fps |
| 128 x 128 px | 23,000 fps |
| | Max. 150,000 fps |

Smart Features

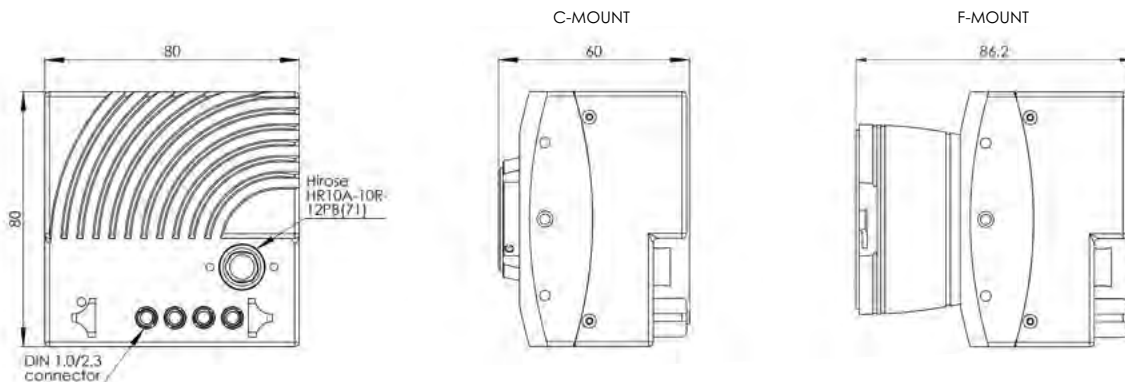
- Gamma Correction
- FPN Correction
- Noise Reduction (PRNU)
- Sequencer Function
- GPIO

Technical Data

(More detailed specifications are available on request)

| EoSens® 1.1 CXP2 monochrome / color | |
|--|-------------------------------|
| Resolution | 1.1 Mpix |
| Active pixels | 1,280 x 864 px |
| Interface | CoaXPress® V2 @ 4 x 12 Gbit/s |
| Frame rate (8 bit) | 3,600 fps |
| Sensor | LUX13HS |
| Sensor type | CMOS global shutter |
| Sensor format | 4/3" |
| Active sensor area (H x V) | 17.50 x 11.80 mm |
| Pixel size | 13.7 x 13.7 µm |
| Sensitivity (mono) | 20 V/lux*s @ 550 nm |
| Pixel data width | 10 / 8 bit |
| Dynamic range | 60 dB |
| Shutter time (steps) | 1 µs |
| Shutter time (range) | 2 µs – 1 s |
| Max. Trigger frequency | 300 kHz |
| Max. Jitter | ±4 ns |
| Mount options | C-Mount / F-Mount |
| Dimensions (W x H x L w/o mount) | 80 x 80 x 53 mm |
| Weight (C-Mount) | 450 g |
| Power consumption | 11 W |
| Power supply | 12 – 24 VDC |
| Camera body temperature | +5 °C ... +50 °C |
| Shock / Vibration proof | 70 g / 7 grms |
| Conformity | CE / RoHS / GenlCam |
| EMVA1288 reports | ✓ |

Camera Body Dimensions



MIKROTRON GmbH

MIKROTRON GmbH provides a full range of high-speed imaging solutions for challenging applications in industry, engineering, science and sports. The company's extreme slow-motion recording solutions enables customers to optimize manufacturing processes, improve product design, revolutionize quality management and analyze motion.

Germany

Landshuter Str. 20-22
D-85716 Unterschleissheim
Phone: +49(0)89-726342-00
E-Mail: info@mikrotron.de
Web: www.mikrotron.de

North America

14032 Hermosillo Way
US-Poway, CA 92064
Phone: +1-858-774-1176
E-Mail: steve.ferrell@mikrotron.de
Web: www.mikrotron.de

